



eFarmer

Navigation Setup Guide

Table of contents

[Mounting the antenna](#)

[Troubleshooting](#)

[Application setup](#)

[Support](#)

Installing the antenna

Set up the antenna along the axis of the tractor within sight. Preferably on the hood. Connect antenna to the power source.

Mounting

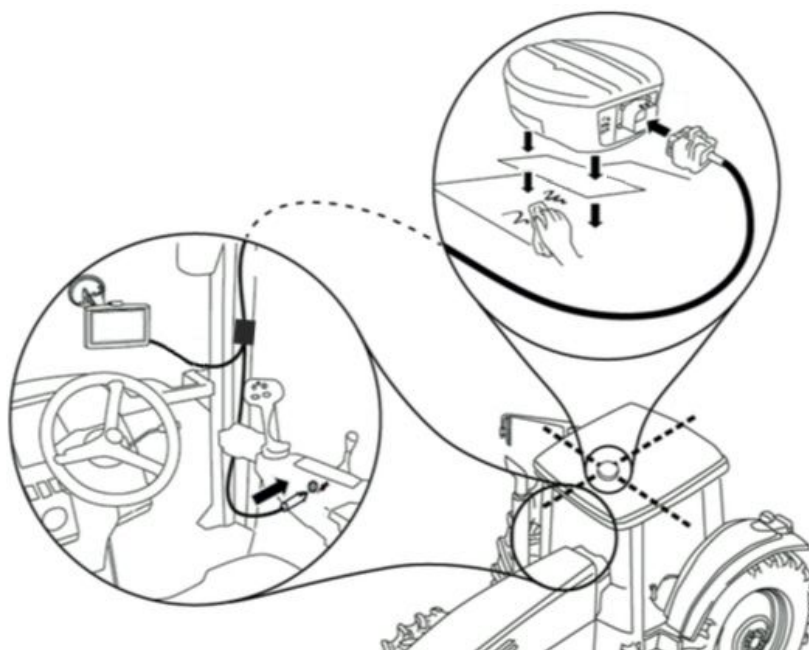


Figure 1. Mounting the antenna to the roof of the vehicle

1. Clean the mounting plane of the vehicle's roof.
2. Mount the AG-STAR antenna on the roof of the vehicle with built-in magnets. Use the metal plate and adhesive tape to mount antenna on plastic roof.
3. Plug the antenna cable into the port at the back of the antenna. The connector fits one way only.
4. Thread the antenna cable into the vehicle's cabin. Make sure not to kink the cable and to locate it so friction does not occur.
5. Insert the power plug of the antenna cable into the vehicle's cigarette lighter outlet.
6. Insert the micro-USB plug into your Android device.

LED status indicators

Indicators on the antenna indicate the status of the receiver. The table below shows the meaning of the LED states in the expected sequence after power is applied.




Red	Yellow	Green	Condition
			
Off	Off	Off	Power is not available.
On	Off	Off	Power is available but no satellites are being tracked yet
On	Flashing	Off	Tracking at least one satellite but not a valid position.
On	On	Off	Position valid in basic autonomous mode.
On	On	Flashing	SBAS tracking, but not enough data for enhanced solution.
On	On	On	Position valid in an enhanced accuracy mode (WAAS/EGNOS/MSAS/DGPS).

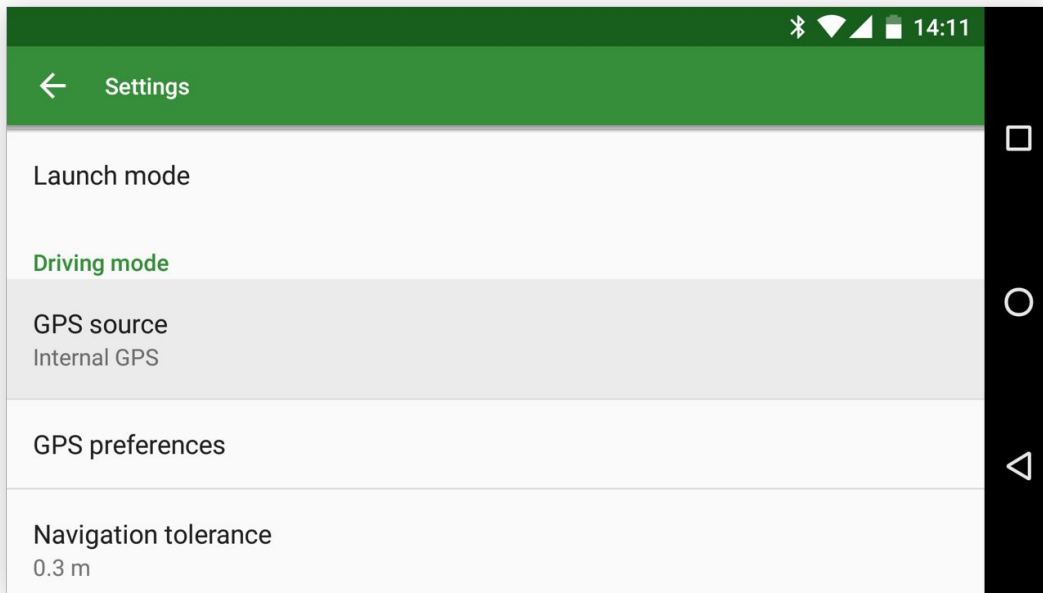
Table 1. LED Status Indicators

Troubleshooting

1. If the power is on but the yellow LED does not flash within one minute, then no satellites are being tracked. There may be excessive blockage or the AG-STAR may be defective. Make sure the AG-STAR has an unobstructed view of the sky. Try power cycling the AG-STAR.
2. If the yellow LED is flashing but doesn't progress to solid yellow within one minute, then insufficient satellites are being tracked or the signal quality is poor and ephemeris data cannot be received. Normally, four satellites are sufficient for a valid position as long as they are widely distributed in the sky. If LED is stuck on blinking yellow, there may be excessive signal blockage or the AG-STAR may be defective. Make sure the AG-STAR has an unobstructed view of the sky. Try power cycling the AG-STAR.
3. If the yellow LED is on, but the green doesn't turn on within five minutes than no SBAS or DGPS positions are available. If you are using SBAS, make sure SBAS is available in your area and that the AG-STAR is configured to enable SBAS positions (SBASCONTROL ENABLE and SELECTCHANCONFIG). For DGPS, make sure the AG-STAR is configured with the correct serial port parameters and to accept the DGPS protocol your area is using and that your data modem is connected and working.
4. The green LED blinks when SBAS is detected then it comes on solid when SBAS is enabled. The LED will stay dark if SBAS is not detected.

Application setup

1. Turn on Bluetooth on your Android device
2. Find the antenna and pair it using the default password 0000, 1111, 1234
3. Launch the **eFarmer** application
4. Go to Settings in the main menu and choose **GPS source**



5. Select the GPS source, as **External** then press **LET'S GO** button

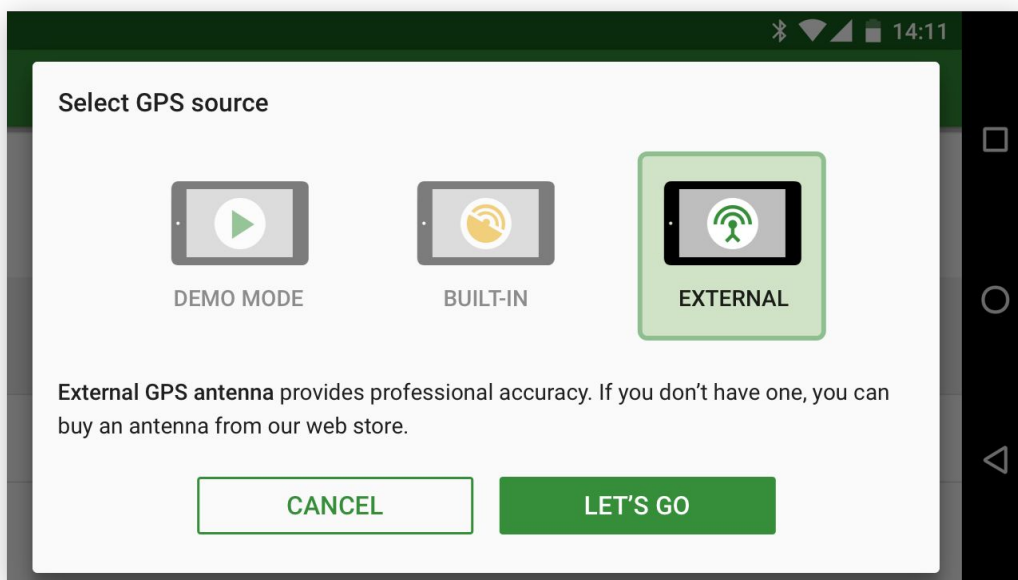
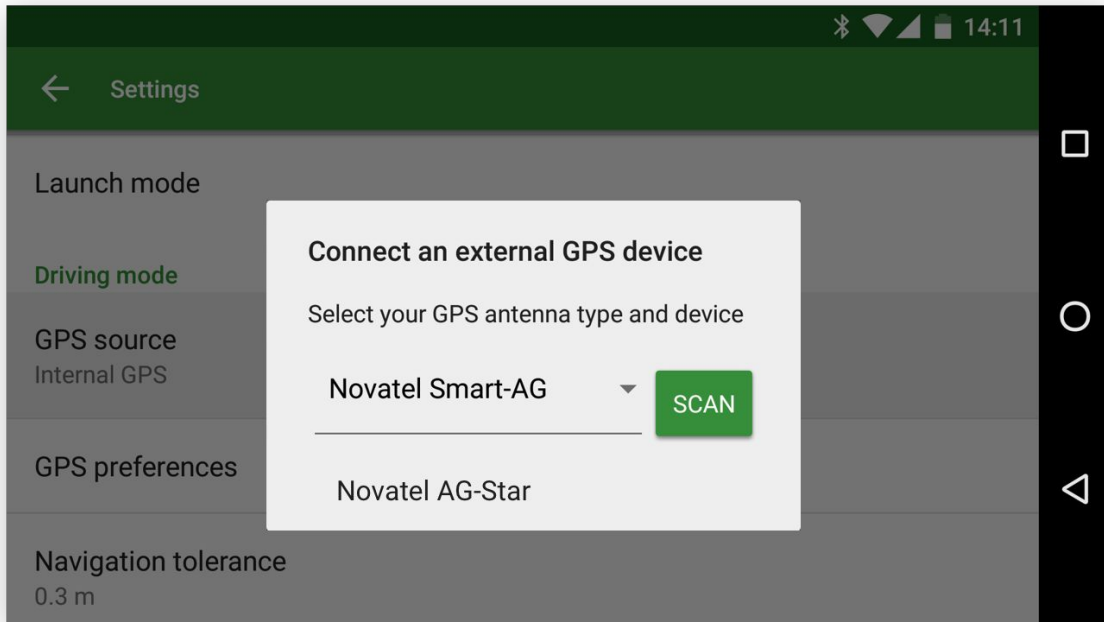
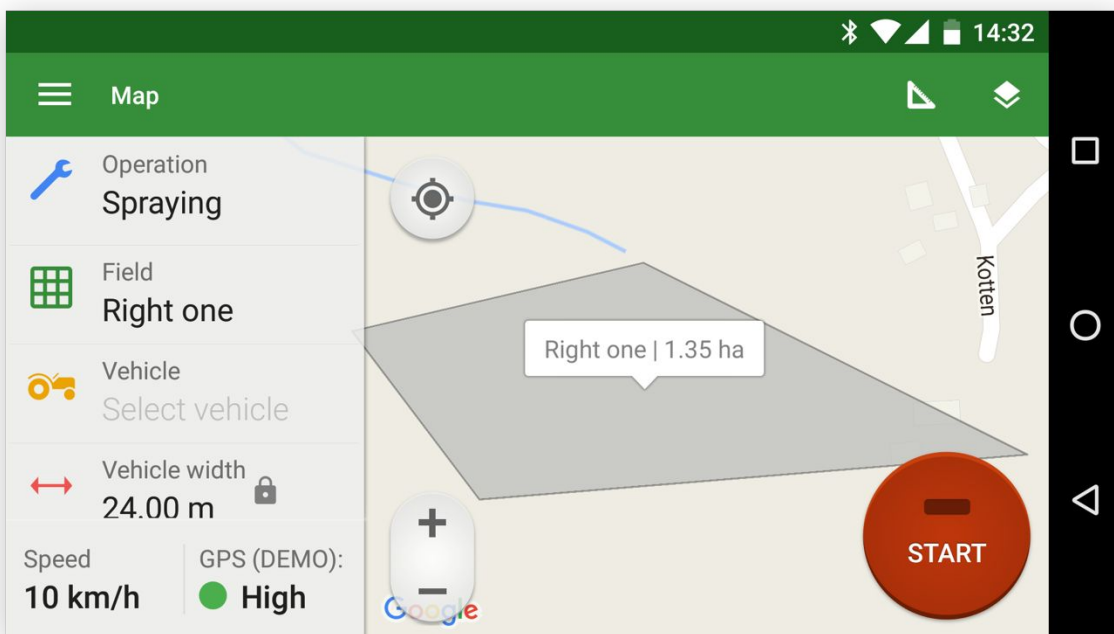


Figure 3. Choose GPS source

6. Select **Novatel Smart AG-Star** in the drop-down list, then press **SCAN**



- 7. In the list of available devices, select the antenna which you want to connect
- 8. Return to map screen and start driving with external antenna connected



Support

If you have any questions or need assistance, our support is there to help you.

Email: support@efarmer.mobi

Skype: eFarmer.Support